

ET Building – 1st Floor

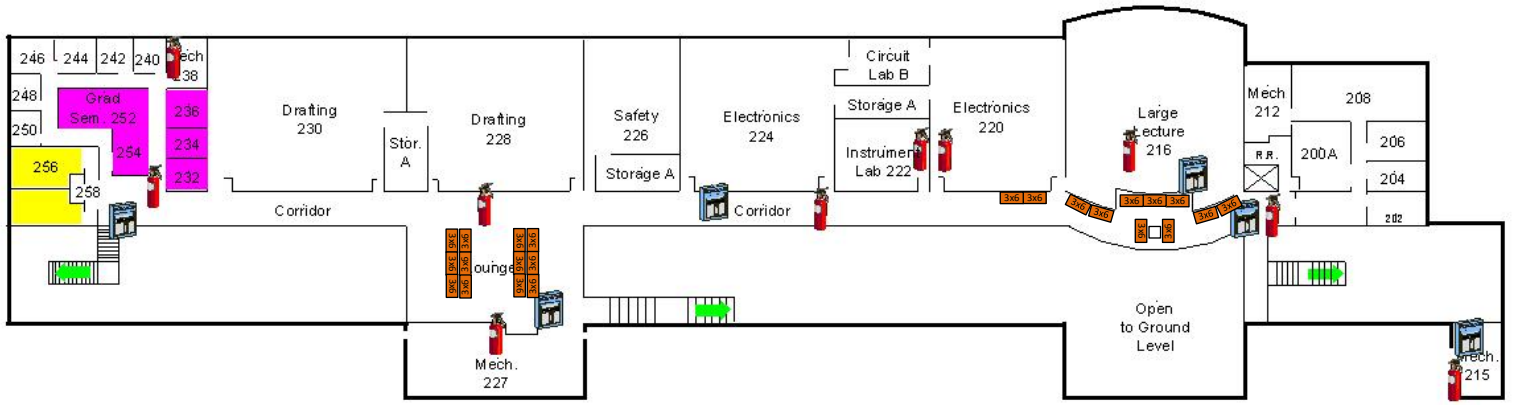
THERE ARE DOORS HERE



Key

- -3' round table
- 3x6 -Easel/Poster
- 3x6 -Table for Registration, Literature, or Food
- 6x6 -Space for Academic/Non-Profit Table and Chairs
- 10x10 -Space for Exhibitors

ET Building – 2nd Floor



Exhibitor Table/Booth Assignments

Commercial Exhibitors (blue)

1. SBI Analytical, Inc.
2. Netzsch Instruments North America, LLC
3. Bruker Corporation
4. Shimadzu Scientific Instruments, Inc.
5. Thermo Fisher Scientific
6. Vernier Software & Technology
7. Sigma-Aldrich
8. Alfa Aesar
9. Agilent Technologies
10. Sapling Learning
11. TCI America
12. Teledyne Isco
13. MeasureNet Technology

Academic/Non-Commercial Exhibitors (green)

1. The ACS Chemistry Clubs of CMU, SVSU, and Alma College/Undergraduate Programming and Resources
2. Central Michigan University Department of Chemistry
3. Science of Advanced Materials Ph.D. Program at Central Michigan University
4. Institute for Great Lakes Research at Central Michigan University
5. Saginaw Valley State University Department of Chemistry
6. ACS Division of Polymeric Materials: Science and Engineering
7. Literature on Some ACS Divisions and Activities